



# Our Heritage—

*For people who favor rebuilding relationships  
and restoring hope for our youth.*

VOL. 1, NO. 3  
AUTUMN 2018

## The Herman R Story

Wernle provides intensive residential treatment in a secure setting for severely emotionally disturbed youth who suffer primary psychiatric challenges such as mood and anxiety disorders, personality disorders, self-destructive behaviors, eating disorders, thought/dissociative disorders, and a history of trauma. The average length of stay is typically between 6 and 12 months. Many find themselves in a juvenile detention facility.

As we kick-off our 140th year of serving the most vulnerable, here's a look back at one of the thousands of orphans we served. Here's Herman's story and the trauma he experienced.

Herman Roth, came to Wernle Orphans' Home in 1896, as a 4-year-old boy and lived his life at Wernle until his death at the age of 77. His parents of Fort Jennings, Ohio, died during an outbreak of typhoid fever. In 1906, at the age of 14, Herman was stricken



with spinal meningitis and was permanently paralyzed from his waist down. In later years, despite being in a wheelchair, Herman became a part-time employee at Wernle. He served as the Home's barber, cobbler, and was a friend to many children through the years. Herman was a member of St. John Lutheran Church in Richmond.

Thank you for always being part of the solution and providing hope and healing in many, many ways.



Wernle board members in front of Hawk Center History Wall

## SCHEDULE A WERNLE CAMPUS TOUR

We welcome the opportunity to show you our 90-acre campus and introduce you to some of our youth and staff. During your visit to Wernle, you'll experience our warm and welcoming atmosphere. You'll be able to tour a residential hall, the Lingle Wellness Center, and the new Hawk Center. One of our friendly and knowledgeable development staff will provide a presentation of our 140-year history and our plans for the future. Please email us at [development@wernle.org](mailto:development@wernle.org) or call 765-993-2506. We look forward to seeing you soon.





Mrs. Dorothy Tillman and Pastor Cliff Nunn

## CHURCH REP— DOROTHY TILLMAN

Mrs. Dorothy Tillman is a longtime friend to the youth at Wernle. She and her family have given of their resources for decades, striving to impact hurting young lives. Additionally, she serves as the Wernle Representative through Trinity Lutheran, in Union City, Ohio. Dorothy serves as the voice of Wernle, helping the congregation to discover meaningful ways for them to contribute towards the recovery of our youth. We are humbled by her dedication and commitment to our mission.



Darrell Gordon with son DJ and daughter Justis

## GORDON HALL DEDICATION

The Gordon Hall residential facility was dedicated on September 12, 2018. Named in honor of Darrell Gordon, President/CEO. "We live and work in an incredible time in history. There is a generation of Americans that desperately need our help: the generation of children who are living in poverty, who are vulnerable and who are destined to repeat a cycle of dysfunction and despair. We are challenged with the opportunity to stop this cycle and bring about a brighter tomorrow in the lives of the children we serve," said Darrell Gordon.

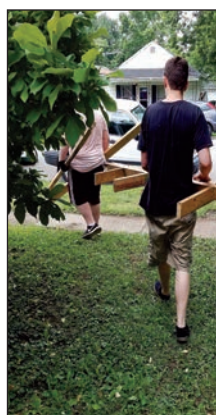
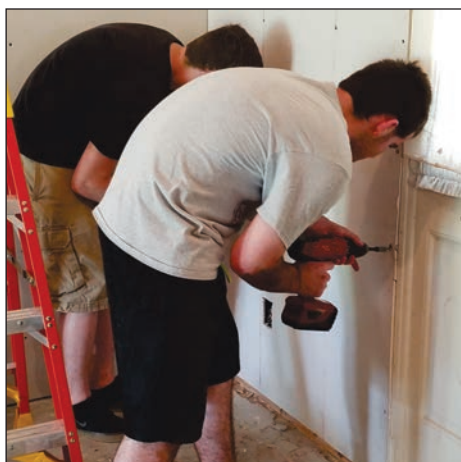
We are truly grateful to the Mathile Family Foundation for their support of Gordon Hall. The Foundation invests in opportunities for educational, social-emotional, and physical development for children and their families. Thank you to the Mathile family for their generous contributions in helping Wernle to maintain our goal of rebuilding relationships and restoring hope for the youth we serve.

## WERNLE RESIDENTS VOLUNTEERED FOR HABITAT FOR HUMANITY

Our board chairman Sandie Rowe, invited several Wernle residents to join her in volunteering to work at a Habitat for Humanity site in Richmond. The youth giving their time and effort to help others gave them a wonderful

feeling. They got to see the immediate impact of their work. They watched a wall go up, cleared a yard of litter, and enjoyed the smiles of the people they helped and worked beside. It was a great

opportunity for our youth to build new stories and cherished memories.



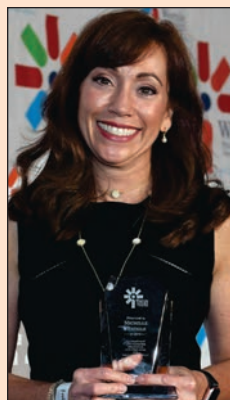


# CATALYST4CHANGE 2018

CLOCKWISE FROM RIGHT: Chairs: Michelle Mathile, Bethany Reid, Carleen Suttman; Mayor Snow, National Honoree Tamika Catchings, and Darrell Gordon; Tamika with girls basketball team; Lifetime Givers: Dan Stamper, Bryan Hawk, and Betty and Tom Leiningner; Alumni of the Year—Zachary Mays and Employee of the Year—Dejuan Dardin; Philanthropist of the Year—Dan Stamper and Local Honoree—Lowe's

premier sponsor

Your small friend, indeed®  
**Health Care Logistics**®  
INC.





## WERNLE BOARD OF DIRECTORS

Sandie Rowe, Chair

Matt Gilmore, Vice Chair

Frank Eck, Jr., Treasurer

Ed Zumstein, Secretary

Willis Bright

Charlotte Maley

Roland Cutter

David McNamee

William Goins

Bob Meckley

Bryan Hawk

Jeffrey Slyman

Amy Hoyng

Bob Swanson

Tom Leininger

John Walker

Victoria Lutz

Ron Westerfeld

Ex Officio

Darrell Gordon, CEO/President

## MISSION

Wernle is a family-focused, child-centered agency providing opportunities for the growth and development of troubled children and their families—individually, interpersonally, and socially—through caring programs and healing relationships which are reflective of God's love revealed through Jesus Christ.



2000 WERNLE ROAD  
P.O. BOX 1386  
RICHMOND, INDIANA 47375-1386

Return Service Requested

PRESORTED  
FIRST CLASS MAIL  
U.S. POSTAGE  
**PAID**  
Chicago, IL  
Permit No. 227

## THANK YOU FOR YOUR SUPPORT

From its conception, Wernle has been approaching individuals, foundations and corporations in the communities we serve to raise money to help make up the difference between fees we obtain and our mounting expense to cover the care for our youth and the unique initiatives tailored to those we serve. For one hundred and forty years, we have relied heavily on government support. Due to cuts in state appropriations for troubled youth, Wernle recognizes the need to become less reliant for long-term sustainability. We rely on donors like you to make possible our ongoing programs and services that enable us to undertake important new initiatives. As you can see, the vital services Wernle provides are made possible by the thoughtful generosity of supporters like you. We sincerely hope you will help us with a gift this year.

Thank you.

