

2020 ANNUAL REPORT

Letter From Our CEO



Dear Friends,

On day we will reflect on 2020 as one of the most difficult years of our lifetimes. The Covid-19 pandemic has caused pain and suffering for so many, and we have seen stark reminders of the serious social and environmental changes demanding our collective action. Against this backdrop, I am incredibly proud of the way our Wernle team and donors have stepped forward

to meet the moment.

We showed remarkable agility and resilience. We pushed through our circumstances with determination, relying on grace, mercy, and the strength of our faithful Lord. Our youth and their families continued to receive full services throughout the year.

We see many attractive opportunities ahead to build on our success and drive long-term sustainable growth, fueled by the

urgent needs of the youth and families we strive to serve. This Annual Report provides but a snapshot of the amazing people we are honored to serve, as well as a glimpse of the future to come.

Wernle has always been home to those who dream of creating a better future for everyone, everywhere – then work together to make it a reality. That is the mindset that enabled us to deliver on our commitments last year, and it is what will lift our organization to new heights in the years to come. Thank you for the confidence you have placed in Wernle with your investments.

For the Children,

Darrell Gordon, MSA, JD, CFRM

2020 Board of Directors

Sandie Rowe
Frank Eck, Jr.
Ed Zumstein
Willis Bright
Roland Cutter
Matt Gilmore
William Goins
Bryan Hawk
Amy Hoyng

Chris Hunt
Tom Leininger
Victoria Lutz
Charlotte Maley
Thomas McCabe
David McNamee
Bethany Reid
William Salvi
Gabrielle Saunders-Hudecek

Jeff Slyman
Pr. Aaron Speakman
Pr. Robert Swanson
Pr. John Walker
Ron Westerfeld
Darrell Gordon, CEO/
President Ex-officio

2020 Wernle Leadership Team



Darrell Gordon
CEO / President



Dr. Kent Grider
Chief Operating
Officer



Teri Chambers
Director of Finance



Tim Branson
Director of Human
Resources



Margaret Mote
Director of Nursing



Norm Smith
Director of Referrals
and Admissions



Tim Knoob
Director of
Programming



Rev. Clifford Nunn
Chaplain/Manager
of Special Events



Chris Parker
Church Relations
Officer



Your small friend, indeed®
Health Care Logistics®
INC.

BARNES & THORNBURG LLP

BT ALLIANCE



CATES
AUTO SERVICE INC.

CHEESEMAN
— SINCE 1948 —

COLDWELL BANKER
LINGLE

FIRST BANK
RICHMOND

Lou's
FOUNDATION

MERIDIAN
HEALTH Services



PRIMEX
PLASTICS CORPORATION

pro source
Technology Solutions

Puntillo & Crane
ORTHODONTICS

Reid Health

RMD Patti

SALVI MEDIA
Real People. Real Marketing.

Jeffrey D. Slyman
Trial Attorney

Thor Construction Company

Vero

West End Bank
Endless Possibilities.

WB
WHITEWATER BROADCASTING



Cody Havens & Darrell Gordon.
Cody was the Alumni Honoree of the Year.



Brian & Bethany Reid
enjoying the silent auction.



"Under the Sea" created by
Wernle Residents.



"Tea Party" a
photo created and
taken by a Wernle
Resident.

A great time was had by all as we gathered for the
2021 CATALYST4CHANGE, our first combination in person & virtual event.

Your small friend, indeed®
Health Care Logistics
INC.



FIRST FIDELITY BANK
RICHMOND



McGowan Brabender



PRIMEX
PLASTICS CORPORATION

Zion Evangelical
Lutheran Church



Reid Health



Natco
REAL FREEDOM



ProCourse
Fiduciary Advisors



BT ALLIANCE



2020 Graduates

**actual names/photos of the graduates were not used in compliance with rules and regulations set forth by the Department of Children's Services.*

Steve came to us in 2019 as a senior. He struggled through his numerous challenges and completed his three needed classes. He then shifted his attention to college and has successfully enrolled in college. He has since left our campus, and is doing well, enjoying college and living independently.

Allen arrived at Wernle in 2017. He has always struggled with low self-esteem and felt that he had no value. After a great deal of work on his part, and amazing support from our staff, Allen received his high school diploma. He is now planning on attending college and becoming a librarian.

Christopher has been at Wernle twice. Most recently he arrived in 2019. This time he was determined to make better choices and complete his education. Staff rallied around him, supporting him and encouraging him. He completed his academic requirements and is enrolling in vocational school to learn underwater welding.

Robert was placed in our care in early 2020. Once he settled in, he began to really participate in his recovery program. He began to see a new path for himself that lead to a brighter future. He graduated and is enrolled in college. He loves to work with his hands and wants to focus on woodworking.

Brian is a hard worker and driven to succeed. By the time he was in the 10th grade, he had already completed 30 of his required Core40 classes. This year he graduated and is enrolling in a 4-year college where he will focus on a degree in business.

Samantha has also been at Wernle before. She returned in 2019 and has been on a steady journey to overcome her past trauma and obstacles. She is a protective and nurturing young lady and has realized that she would like a career in nursing. After graduating she enrolled in a nursing program. We know she will succeed.



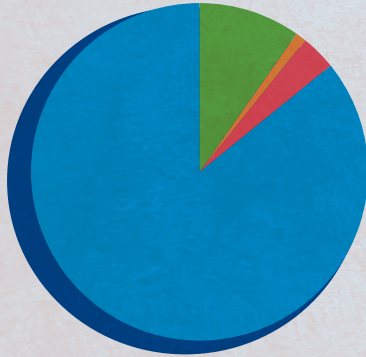
Thank you, friends and partners, for helping these amazing young people realize their dreams. Your love, prayers, and support are helping us change lives. Thank you!

Art Creations - Students of Wernle



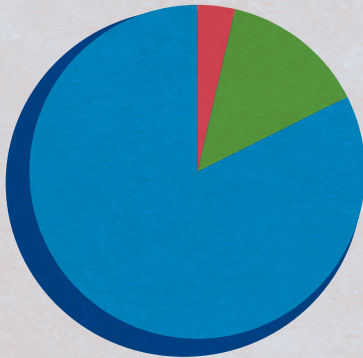
During the summer Wernle worked with local artists to host classes on our campus. Many of our youth's creations were available in the silent auction during the 2021 Catalyst4Change.

Public Support and Revenue



■	Service Fees (85%)	\$6,652,158.19
■	Grants (Title I) (0%)	\$0
■	Contributions and Bequests (4.2%)	\$326,405.20
■	Gifts in Kind (0.4%)	\$27,830.60
■	Auxiliary (School Lunch, Investment, Other) (10.4%)	\$815,391.45
	Total Public Support & Revenue	\$7,821,785.44

Functional Expenses



■	Program Services (84%)	\$7,533,233.26
■	Management and General (13%)	\$1,210,399.57
■	Fundraising (3%)	\$238,212.91
	Total	\$8,982,835.74

Capital Projects

HERE WE GROW AGAIN

*Our current expansion and remodel projects.
Contact us to see how you can establish your
legacy and secure the future for our youth and
families.*

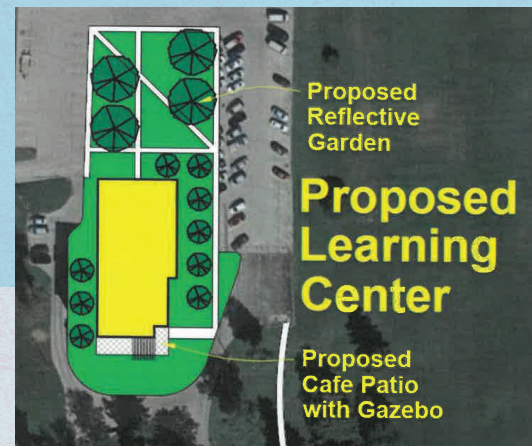




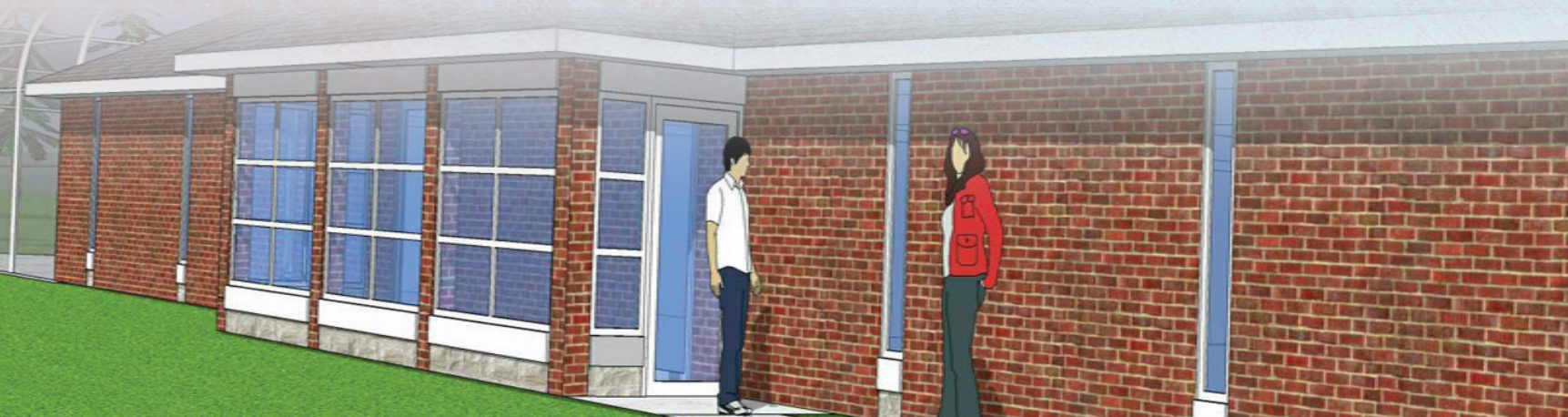
Family Apartments



Multi-Purpose Recreation Field



Proposed Learning Center



Thank You to all our generous donors. Your support is powerful.
Helping our children & families today is an investment in a better world for tomorrow.

Ways to Give to Wernle

A gift to Wernle can be made in a number of different ways - as a memorial or tribute to another person, as a spontaneous online donation, or as a contribution to the Wernle Endowment.

Make a Monthly Gift

Make an even bigger impact to restore and heal troubled youth by making your gift monthly. Becoming a monthly donor means more meals for the youth who need it the most.

Honor and Memorial Giving

You can remember and honor someone special by making a gift to Wernle in their name. In their memory, help support more youth.

Workplace Giving

Your employer and coworkers can join you in helping our youth. There are multiple ways to get involved through workplace giving, including payroll deductions.

Planned Giving

Be a part of our future by including Wernle in your estate plans. Your legacy can help support our shared vision of restoring hope to our youth.

Corporate Partnerships and Foundations

The efforts and generosity of our partners and their corporate giving initiatives have significantly enhanced Wernle's youth-efforts.

Fundraise for Wernle

We need your help getting your friends and family involved in our mission. A personal fundraiser is an easy and effective way to take on the crisis our youth are facing together.

Donor-Advised Funds

An increasingly popular charitable vehicle, donor advised funds are an excellent way to both simplify your charitable giving and facilitate your strategic philanthropic goals.

In-Kind Giving

Wernle welcomes the opportunity to consider in kind gifts of toys, games, activity supplies, equipment, capital improvements and other tangible items. In-kind donations often directly benefit our youth - and makes a real difference in their lives.

Gift of Stock

Stocks, bonds or any other securities can be transferred as gifts. Giving the gift of stock also has benefits for the giver. If the stock has appreciated in value, the holder can avoid paying the capital gains tax by giving it as a gift.



Mission

Wernle is a family focused, child centered agency providing opportunities for the growth and development of troubled children and their families—individually, interpersonally, and socially—through caring programs and healing relationships which are reflective of God's love revealed in Jesus Christ.

Core Purpose

"Rebuilding Relationships . . . Restoring Hope . . ."

***Serving the most vulnerable since 1879.
Thank you for your support.***

2000 Wernle Road
P.O. Box 1386
Richmond, IN 47375
765.966.2506
development@wernle.org